

## Din Rail UPS

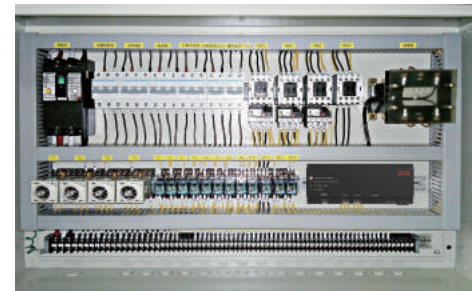
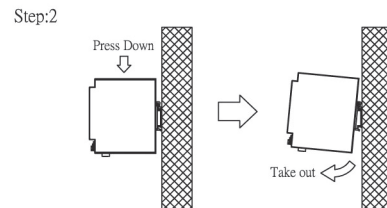
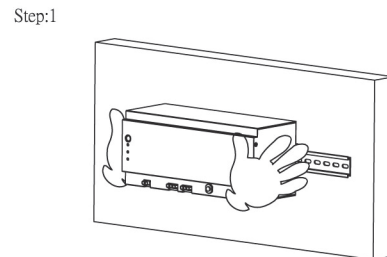
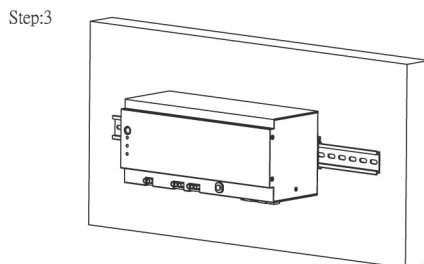
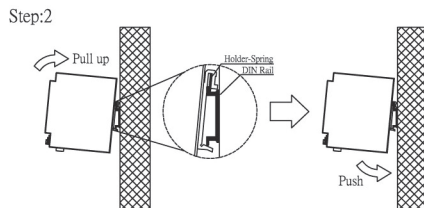
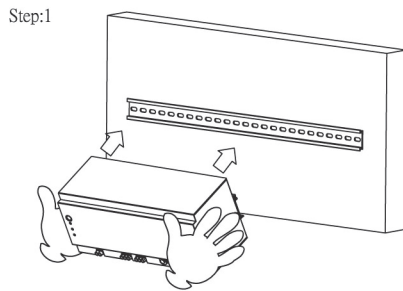
The SA-DRU Din Rail UPS is a smart, compact and reliable power supply with industry leading design and wide range operation temperature.



### Features & Applications

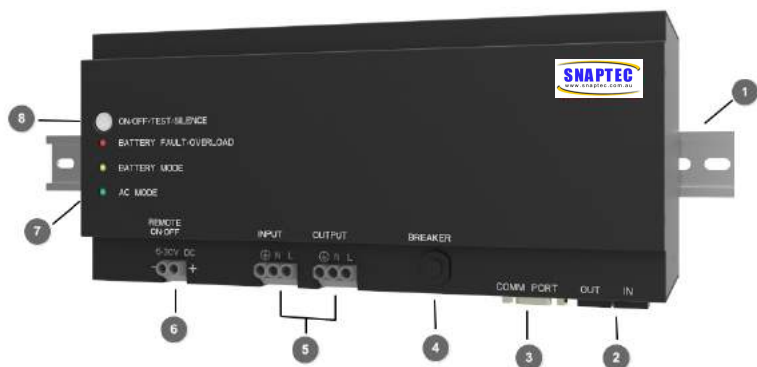
- Light weight and compact industrial design
- Wide operation temperature range
- Cold start capability
- Surge protection
- Tel-communication protection, RJ45
- Simulated sine wave output
- RS232 Communication Port
- Programmable logic controllers
- Factory automation control
- Robotics
- Conveying equipment
- Manufacturing equipment
- IP-based control system
- Automation control

### Mounting & Removal



Power control cabinet

## Front Panel



1. Din rail mount brackets
2. Tel-communication protection
3. RS232 remote communication port
4. Input circuit breaker
5. Input / output screw connectors
6. Remote on / off bottom
7. LED indicators
  - Battery warning or overload indicator(Red)
  - On battery mode indicator(Yellow)
  - AC input(Green)
8. Power ON, OFF and Test bottom

## Specification

Model		SA-DRU500	SA-DRU850
Capacity		500VA / 300W	850VA / 510W
	Voltage	230V (±20%)INPUT	
	Frequency	50Hz ± 10% ; 60Hz± 10%	
OUTPUT	Voltage battery mode	230V ±5%	
	Frequency (on battery)	50 / 60HZ ±0.3Hz	
	Waveform	Simulated sine wave	
	Transfer time	<b>Text</b> 4 - 6 ms typical	
PROTECTION	Overload protection	UPS automatic power off if overload exceeds 105% of nominal at 20 seconds; 120% at 10 seconds; 130% at 3 seconds	
	Short circuit protection	UPS output cut off immediately	
BATTERY	Type	Sealed, maintenance-free lead acid battery	
	Battery quantity	12V 7.2Ah x 1	12V 9Ah x 1
	Typical recharge time	8 hours to 90% capacity after full discharge	
	Backup time (100% load)	4 mins	2 mins
GENERAL	Dimension (W x D x H)	281mm x 116mm x 124mm	
	Product weight	4.4kg	4.9kg
	Elevation	5000 ft without derating	
	Shock and vibration	ISTA 2A	
	Audible noise	<40dBA (1meter from surface)	
	Operating temperature	0° C to 50° C	
	Storage temperature	-15° C to +60° C	
Humidity	1-95%, non-condensing		

© All right reserved. All trademarks are property of their respective owners. Specifications are subject to change without notice.